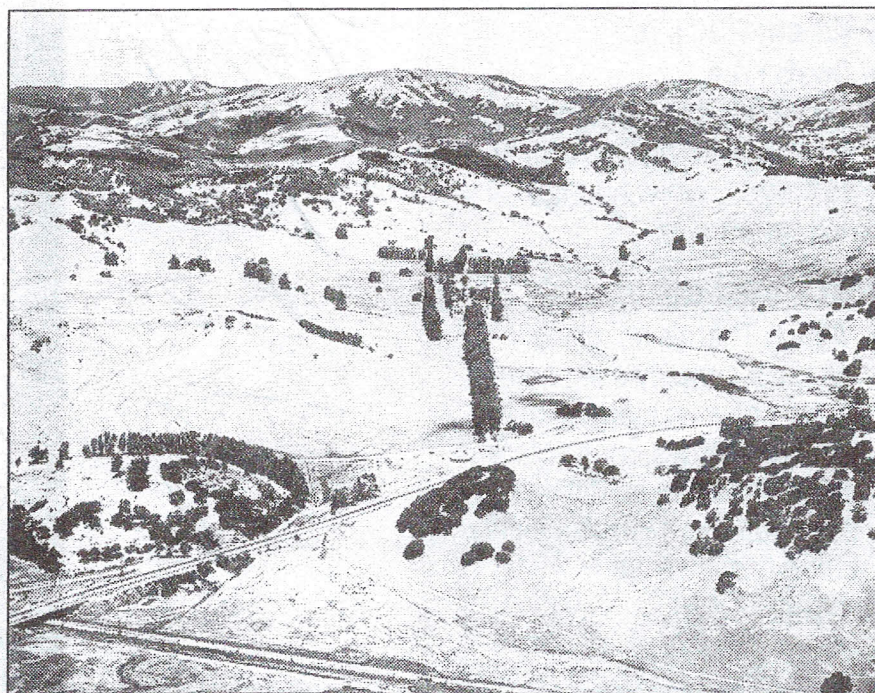


HISTORY WATCH



Terra Linda in 1953.

WELCOME

In May 1953, approval to build in Terra Linda came after Manuel T. Freitas' heirs sold 400 acres to the Terra Linda Corp. (Hundreds of their cattle were shipped to Novato.) The end of World War II pushed for more residential development, with Terra Linda becoming Marin County's largest subdivision after the County Planning Commission authorized 5,700 homes. On July 29, 1954, a family moved into their new home on Oleander Drive, reportedly making them the first Terra Linda residents. The occasion was marked by a ceremony in which they were presented with everything from a month's supply of Borden's milk and ice cream to a savings account.

History Watch is provided by the Marin History Museum, www.marin-history.org, and appears Tuesday in the Generations section. Images included in History Watch are available for purchase by calling 382-0770 or by e-mail at photoservices@marinhistory.org